



BTA2-3C



产品特点

- >13A切换大容量
- >多种接点形式：1C(1组转换) (2C)2组转换, 3C(3组转换)
- >可选磁吹灭弧装置
- >LED指示灯：显示线圈“接通”或都“断开”状态
- >手动按钮：线圈不通电情况下，允许手动操作手动按钮，适用于调试人员手动测试电路
- >环保产品RoHS和REACH

型号说明

| | | | | | | | |
|-------|--|-----|--|---|----|----|--------|
| 编号说明 | BTA2 | -2C | | S | -C | ML | -24VDC |
| 系列: | BTA2 | | | | | | |
| 触点形式 | 1C:SDPDT 2C:DPDT 3C:3PDT | | | | | | |
| 触点负载 | 空白Blank: 1C:13A 2C:12A 3C:11A | | | | | | |
| 引出端形式 | S2:4.8*0.5mm / S1:4.8*0.8mm P2:1.2*0.8mm / P3:1.2*0.5mm | | | | | | |
| 外壳样式 | C:标准型普通外壳 C1:侧面法兰外壳 C3:顶端法兰外壳 C4:卡轨外壳 | | | | | | |

选配

- M: 手动测试按钮 (未选 : 表示无手动测试按钮)
- L: LED指示灯 (未选 : 表示无LED指示灯)
- B: 磁铁灭弧 (仅对2C直流负载)
- 注 : AC指示灯为红色 DC指示灯为绿色

线圈电压Coil voltage

A: AC交流 DC: DC直流 (6-110VDC 6-240VAC)

>产品性能

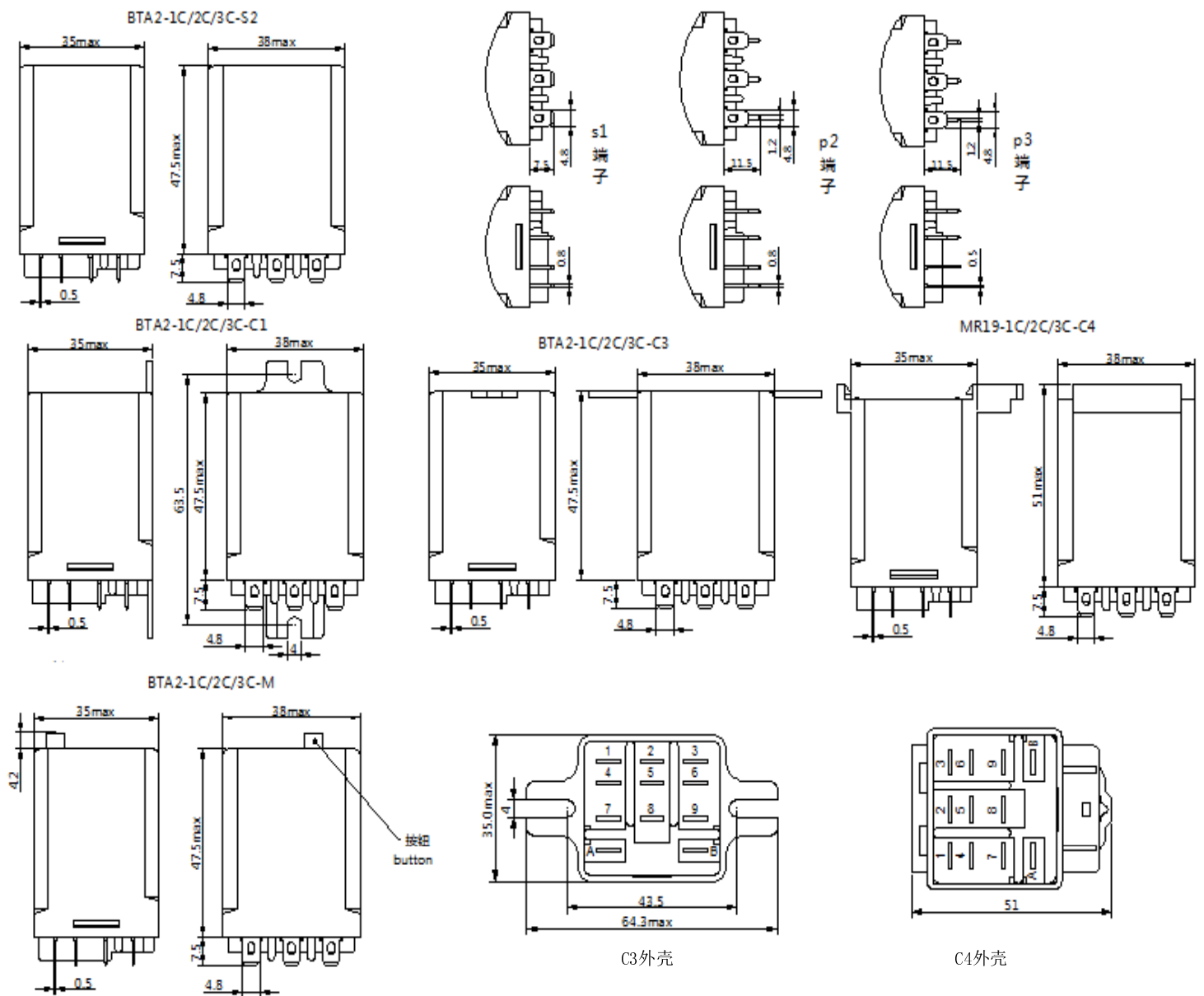
| 触点 | 型式 | | 1C | 2C | 3C |
|----------------------------|-----------|----------------------------|--|---------------------------------|---------------------------------|
| | 负载 | 阻性 | 13A @28VDC;240VAC | 12A@28VDC/240VAC; 13A@120VAC | 11A@28VDC/240VAC; 13A@120VAC |
| | 马达 | 1/3Hp,120VAC/ 1/2Hp,240VAC | | | |
| | 切换功率 | 364W/3120VA | 364W/2880VA | 308W/2640VA | |
| | 接触电阻 (初始) | ≤50mΩ | | | |
| | 触点材料 | AgSnO2 银锡 | | | |
| | 电气寿命 | 10,000 ops | | | |
| | 机械寿命 | 1000,000 ops | | | |
| 吸合电压 (23℃) | | | DC: ≤80%(额定电压), AC: ≤85% 50/60HZ(额定电压) | | |
| 释放电压 (23℃) | | | DC: ≥10%(额定电压), AC: ≥30% 50/60HZ(额定电压) | | |
| 最大电压 (23℃) | | | 110% (额定电压) | | |
| 绝缘电阻 Insulation resistance | | | 1000MΩ @500VDC | | |
| 线圈功率 | DC(W) | | 1.2W | | |
| | AC(VA) | | 2.0~3.0VA | | |
| 吸合时间(额定电压) | | | AC≤30ms DC≤20ms | | |
| 释放时间(额定电压) | | | AC≤25ms, DC≤15ms | | |
| 初始耐压 | 同极触点之间 | | 1000VAC,1Min (漏电流1mA) | | |
| | 异极触点之间 | | 1500VAC,1Min (漏电流1mA) | | |
| | 线圈与触点间 | | 1500VAC,1Min (漏电流1mA) | | |
| 环境温度 | | | -30℃~+65℃ (AC/DC) (无结冰、无结露) | | |
| 环境湿度 | | | 5%RH~85%RH | | |
| 大气压力 | | | 86-106KPa | | |
| 冲击稳定性 | | | 98m/s ² | | |
| 耐冲击强度 | | | 980m/s ² | | |
| 耐振动 | | | 10Hz~55Hz, Double amplitude 1.0mm | | |
| 安装方式 | | | 插入式&PCB式可选 | | |
| 体积 | | | 35mm×35mm ×53mm | | |
| 重量 | | | 约88g | 约90g | 约92g |

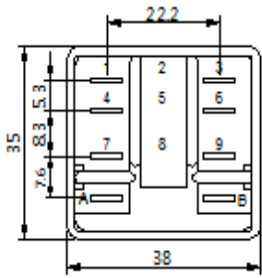
>线圈规格表 (环境温度+ 23℃)

| 额定电压 (V) | | 工作电压 (V) | 释放电压 (V) | 最大电压(V) | 线圈电阻(Ω) ±10% |
|--------------|---------------|----------|----------|---------|--------------|
| 1C/2C/ 3C | 6VDC | ≤80% | ≥10% | 110% | 32 |
| | 12VDC | | | | 120 |
| | 24VDC | | | | 472 |
| | 48VDC | | | | 1800 |
| | 110VDC | | | | 10000 |
| 1C/2C | 6VAC | ≤85% | ≥30% | | 6 |
| | 12VAC | | | | 21 |
| | 24VAC | | | | 85 |
| | 48VAC | | | | 350 |
| | 110VAC | | | | 1900 |
| | 120VAC | | | | 2250 |
| | 220VAC/230VAC | | | | 7200 |
| | 240VAC | | | | 9110 |
| 3C | 6VAC | ≤85% | ≥30% | | 4.2 |
| | 12VAC | | | | 18 |
| | 24VAC | | | 72 | |
| | 48VAC | | | 280 | |
| | 110VAC | | | 1500 | |
| | 120VAC | | | 1700 | |
| | 220VAC/230VAC | | | 6000 | |
| | 240VAC | | | 7200 | |

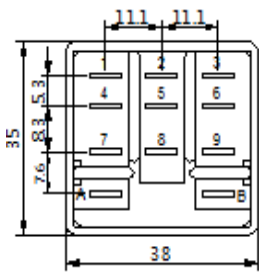
备注：最大电压是指继电器在短时间内能够承受的最大电压值。

>外形图尺寸 (mm)

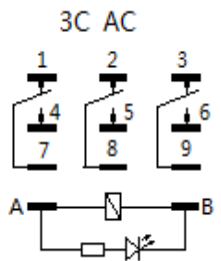
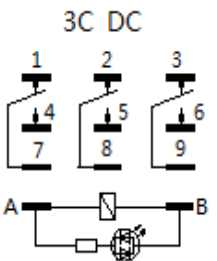
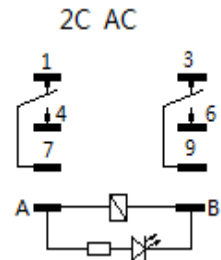
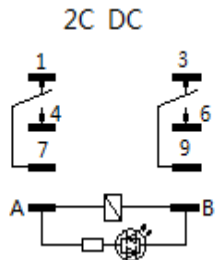
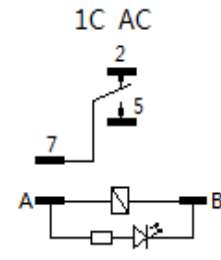
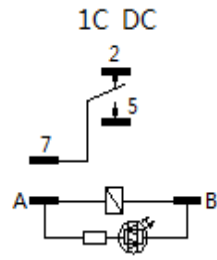




BTA2-1C/2C



BTA2-3C



>>>其它可选插座 (相关参数见BTA3插座说明)



BTA3-11A